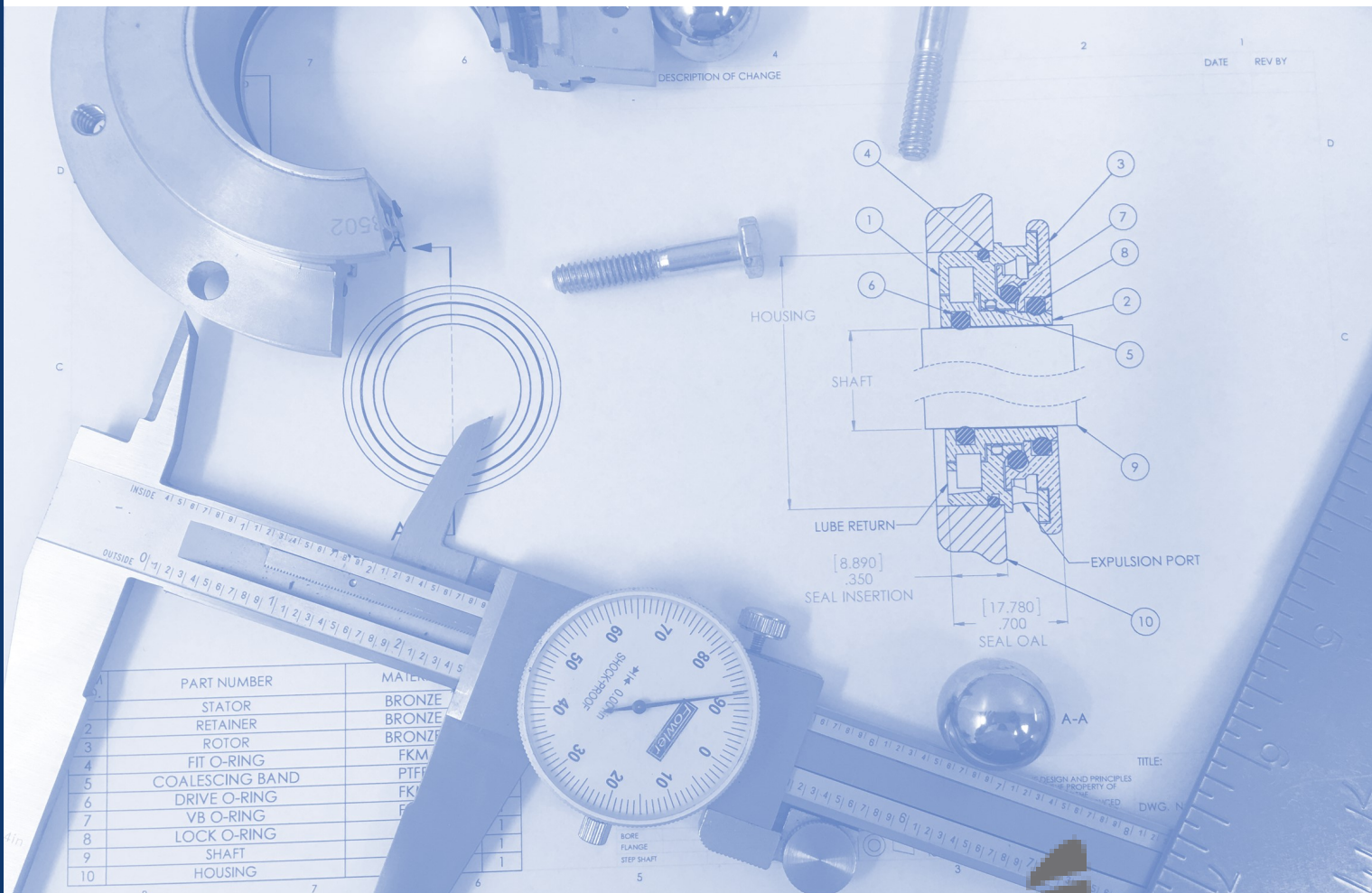




GCI

Reliability Centered Solutions



Consulting

Sales

Training

Contamination Control

Lubrication Management

Condition-based Monitoring

Rotating Equipment Parts and Accessories

Machine Guarding

Providing quality, on-time solutions to reliability and maintenance professionals with superior customer service

PRODUCTS

G.C.I., Inc. is a proud distributor of the following products:



INPRO/SEAL®
A Waukesha Bearings Business

GUARANTEED PERFORMANCE

Inpro/Seal is committed to delivering customer engineered solutions and superior customer support ... standard with every solution. All Inpro/Seal products are backed by their performance guarantee.

SYSTEM & BEARING PROTECTION

- Permanent Bearing Protection
- Complete Shaft Seals
- Shaft Grounding Solutions
- Steam Turbine Floating Brush Seals

APPLICATION SOLUTIONS

- Motors
- Pumps
- Steam Turbines
- Sleeve Bearing Motors
- Gearboxes
- Pillow Blocks
- Paper Machine Rolls
- Mixers and Blenders
- Agitators
- Extruders

INDUSTRIES SERVED

- Oil and Gas
- Chemical Processessing
- Pulp and Paper
- Processing
- Power Generation
- Mining
- Primary Metals
- HVAC

Inpro/Seal® is the world leader in the design and manufacture of permanent bearing protection and complete shaft seals for rotating equipment. Since inventing the original Bearing Isolator in 1977 Inpro/Seal has maintained a leadership position in the niche markets they serve.

Inpro/Seal's unique product lines increase MTBR and decrease downtime on multiple applications operating in a variety of industries. With over 30 years of knowledge and real world experience, their custom engineered solutions, same day shipments and localized sales force will provide you with the right technology, right when you need it.

PERMANENT BEARING PROTECTION

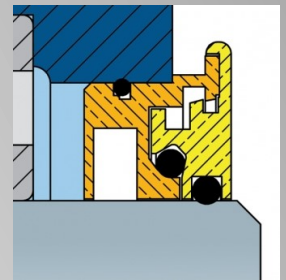
The Original Bearing Isolator

The Inpro/Seal Bearing Isolator is a two part dynamic seal consisting of a stator and a rotor attached to the shaft. The rotor and stator form a non-contacting compound labyrinth seal with no wearing parts—ensuring permanent protection.

Keep contamination out. Keep lubrication in.

VB45-S™ Bearing Isolator

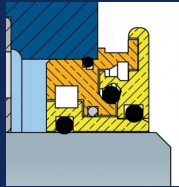
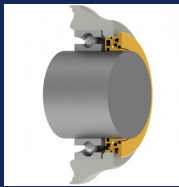
The VB45-S Bearing Isolator is the new standard in Bearing Isolator technology. The next step in permanent bearing protection, Inpro/Seal's latest design provides the best protection against contamination ingress (IP66 rated) and lubrication loss available, at only a 15.88 mm (0.625 in.) overall length.



The VB45-S ensures premium protection in such a small design envelope by utilizing multiple innovative design features. The patented XX Interface and oversized contamination chamber blocks contaminants from entering the bearing housing while the enlarged D-Groove protects against oil loss by capturing oil on the shaft and returning to the bearing housing. The unique VB45 Chamber houses the VBX® Ring to inhibit the transfer of vapor contamination created by the heating/cooling of the bearing enclosure.

VB45-U™ Bearing Isolator

The VB45-U Bearing Isolator is one of the most robust Bearing Isolator designs ever developed. It provides permanent bearing protection by protecting against lubrication loss for both oil, oil mist and grease lubricated equipment and is IP66 rated for high contamination ingress protection. This unique design also handles extreme amounts of axial movement while only having a 17.78mm (0.700 in.) overall length, allowing for premium protection in limited space.



The VB45-U ensures premium protection by utilizing multiple innovative design features. The patented XX Interface blocks contaminants from entering the bearing housing while the D-Groove and Coalescing Ring protect against oil or grease loss. The unique VB45 Chamber houses the VBX® Ring to inhibit the transfer of vapor contamination created by the heating/cooling of the bearing enclosure. The unitized construction accommodates 6.35 mm (0.250 in.) of axial movement.

AM SOLUTIONS 4 FAMILIES

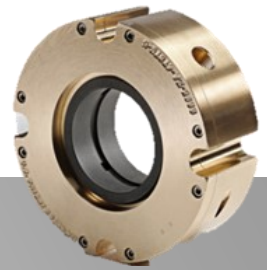
- AM Smooth Bore
HT—High Temperature
DS—Dual Shaft
ATX—ATEX—Non Sparking
- AM Food Grade
USDA
DS—Dual Shaft
ATX—ATEX—Non Sparking
- AM Rotor
CEMA—Converting Equipment
Manufacturer's Association
- AM Directional
Single
Double



AM SOLUTIONS

Complete Shaft Seals

Inpro/Seal AM (Air Mizer®) Solutions are complete non-contacting shaft seals designed to prevent product loss, harmful emissions and contamination over the lifetime of your rotating equipment.
No Production Loss. No Harmful Emissions. No Contamination.



SMART™



SHAFT GROUNDING SOLUTIONS

Current Diverter Ring® & Motor Grounding Seal®

The Inpro/Seal Current Diverter Ring (CDR®) technology protects your motor bearings and coupled equipment from damaging electrical currents. On server-duty applications, The Smart Motor Grounding Seal (MSG®) provides complete bearing protection against shaft currents, contamination ingress and lubrication loss.

Smart Ground Monitor™

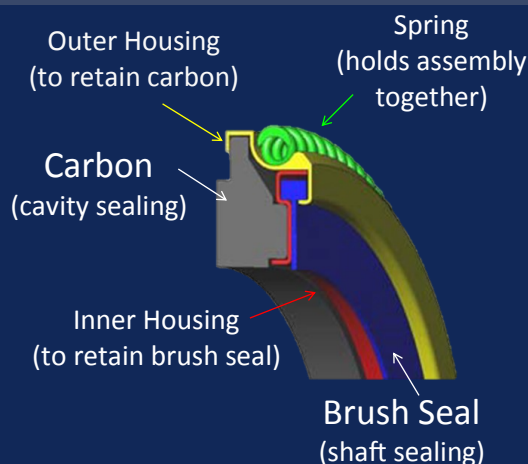
The Inpro/Seal® Smart Ground Monitor™ is a condition monitoring system that provides instant feedback on the performance of the Smarty CDR® or Smart MGS®

STEAM TURBINE FLOATING BRUSH SEALS

Sentinel™ Floating Brush Seal (FBS)

The Inpro/Seal Sentinel FBS extends maintenance intervals to 3-4 years over conventional carbon rings which normally last 6-12 months. Designed as a drop-in replacement for existing carbon rings, the Sentinel FBS eliminates costly casing modifications and rotor removal for seal installation.

The Sentinel FBS is comprised of densely packed and flexible metallic bristles that bend with changing clearances between rotating and stationary surfaces. The brush serves as the primary shaft seal while a carbon element provides face sealing in the turbine's casing. This unique technology provides an extra layer of protection that slows down the natural wear of downstream carbon rings—reducing maintenance, downtime and steam loss.



TRICO



For over 100 years, Trico has provided customers lubrication management solutions with a focus on industrial equipment performance and reliability.

SERVICES

- Training and Mentoring
- In-Plant Services
- Oil Analysis Services
- Lube Management Solutions

PRODUCTS

- Storage, Handling & Identification
- Contamination Control
- Oil Sampling
- Lubrication & Re-lubrication
- Grease Lubrication
- Visual Inspection
- Central Lubrication
- Metalworking
- Lab Instrumentation

REAL-TIME LUBRICATION MANAGEMENT

Sensei is a system of **Sensing** devices connected via a wireless **Network** and delivering valuable **Intelligence** about the lubrication inside your critical equipment. Backed by the experts at Trico to guide you toward a more proactive maintenance mindset – marked by maximum uptime, efficiency and confidence.



Ongoing insight

- Continuously monitors and transmits key parameters to your network via Wi-Fi



Simple to integrate

- Sensing devices installed in minutes at your machines
- Compatible with your existing lubrication components, including industry-leading Opto-Matic Oilers



Watches your oil for you

- Continuous infrared monitoring of oil level and ambient temperature
- Designed to fit easily over Trico Opto-Matic Oilers—with the world recognized #5 glass reservoir

OIL SAMPLING

- Sampling Ports
- Pitot Tubes
- Vacuum Pumps
- Oil Sampling Bottles



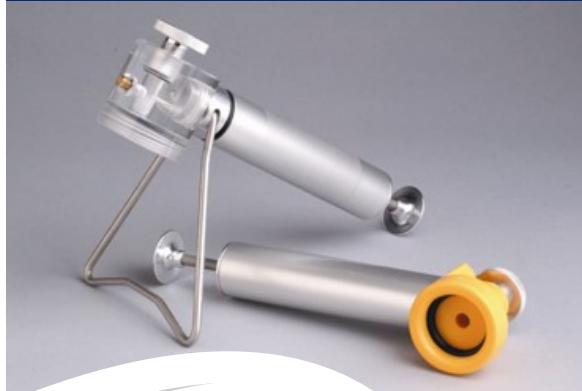
OIL ABSORBENT PRODUCTS

- Perforated Rolls
- Absorbent Pads
- Absorbent Sock
- Drum Top Pads



VISUAL INSPECTION

- Liquid Level Gauges
- Sump Bottles
- Viewports



Reliability Centered Solutions



STORAGE, HANDLING, & IDENTIFICATION

Oil storage, handling, and identification are all critical to maintain a world class lubrication management program. Trico's spectrum brand offers bulk storage systems, pumps, transfer containers, funnels, and color coding systems to make your storage, handling and identification a snap.



spectrum
OIL CONTAINERS



CONTAMINATION CONTROL

- Desiccant Breathers
- Drum Pump Filtration Systems
- Filter Media Elements
- High and Low-Viscosity Filtration Systems
- Hydraulic Reservoir Breather Kits



CONSTANT LEVEL LUBRICATION

Constant level oilers are designed to maintain a predetermined oil level in a sump, which is necessary for proper lubrication. If the oil level drops below a certain point, the depleted oil automatically self levels based on the lubricator's volume. This adds the perfect amount of lubricant every time increasing efficiencies in the equipment and the scheduling of regularly scheduled maintenance. This results in lower cost of maintaining the machine as well as less repair and wear on critical parts.

GREASE LUBRICATION

Grease lubrication of moving parts is critical in protecting against wear. Grease also acts as a contamination barrier. There are several methods to apply grease to an application point. Single-point lubricators and multi-point lubrication systems work together to keep bearings and other moving parts lubricated properly.

Reliability Centered Solutions



TOUGH

Uniguard Nonmetallic Machine Guards are designed for the most demanding power transmission applications. These guards are built **TOUGH** to last, from premium grade UV stabilized High Density Polyethylene (black) and UV stabilized Ultra High Molecular Weight Polyethylene (orange). Mounting brackets are also made from UHMW-PE. All hardware is Stainless Steel for the most demanding corrosive and outdoor applications.

SAFE

Uniguards are built with **SAFETY** at the forefront with Thru-Color Safety Orange that is highly visible, will not rust and never requires painting (guards can also be black or yellow). Every guard is supplied with an ANSI compliant safety label. All Uniguard products are impact resistant and will not dent like metallic guard. When impacted the PE material will return to its original shape. Uniguards do not have holes larger than 1/4" preventing fingers or tools from entering. Uniguards are chemical, corrosion, UV and impact resistant.

SIMPLE

Uniguards are **SIMPLE**: simple to size, simple to order, simple to modify, simple to install and maintain.



MACHINE GUARDING SOLUTIONS—

A Better & Economical Approach to Employee Safety

Uniguard manufactures vertical belt machine guards, horizontal belt machine guards, and machine guards with a clear polycarbonate inspection window, OSHA-compliant polyethylene guards, nonmetallic adjustable-width machine guards, and ANSI/OSHA-compliant nonmetallic pump guards.

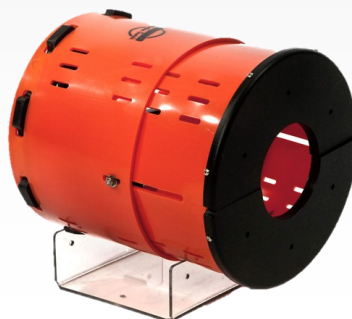
TYPE GDSA GUARD

These nonmetallic, lightweight, adjustable length guards feature a one-piece split design that remains connected on top and opens like a clam-shell for easy installation.



TYPE ANSI PUMP BARREL GUARD

This cantilevered guard bolts directly to the bearing frame of the pump and eliminates drilling the base to mount the guard. Standard designs are available to fit Goulds, Durco, Sulzer and other ANSI size pumps.





TYPE CGU KIT GUARD

This is Uniguard's most economical guarding solution, in stock and ready to ship. The CGU Kit is a one-piece "dog house" style guard that easily slips over the equipment shafts and is supplied with panels to fill the void underneath the shaft.



TYPE BELT/CHAIN MACHINE GUARD

The one-piece Vertical Machine Guard incorporates solid panels front and rear that are vertically split in the center. The Horizontal Machine Guard comes standard with a vented front panel and a solid removable rear panel. Shaft holes are easily located and field drilled with a hole saw.



TYPE UNICLEAR GUARD™

Designed for simple installation, to allow visual inspection, and keep hands out. Available for certain Goulds, Durco, Sulzer, and other pumps.



TYPE CLGU GUARD

The CLGU Guard is a vertically split two-piece coupling guard that is easy to install and maintain. It features a clear Polycarbonate window that is easy to remove for stroboscope inspections and/or coupling lubrication. The window is easily cleaned with mild soap and water. Shaft holes can be included at no additional charge.



TYPE CG SPLIT GUARD

CG Split Guards are vertically split one-piece guards that remain connected on top and open like a clam-shell for easy installation. Field modifications are easy and do not require special tools. Shaft holes can be included at no

CUSTOM DESIGNED GUARDS

Uniguard can custom design a variety of Horizontal Belt Guards, Vertical Belt Guards, Jack Shaft Guards and Tapered Belt Guards along with CLGU and CG Split.





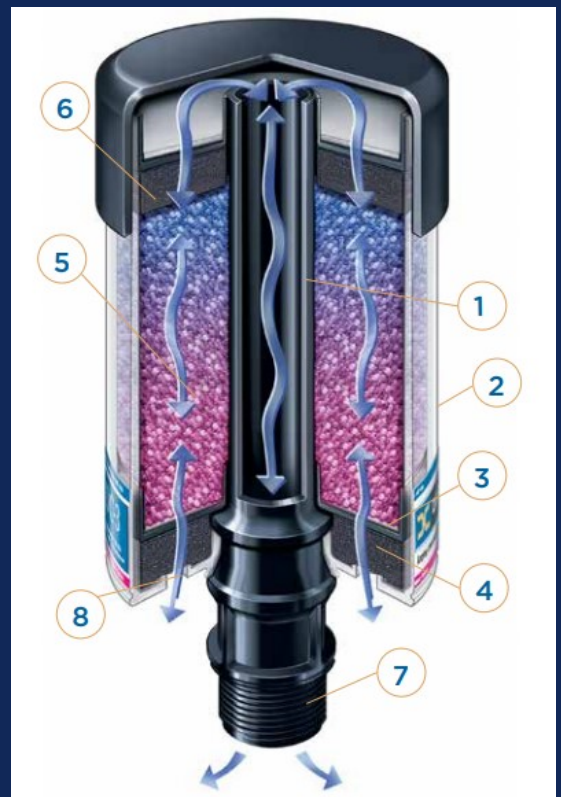
Des-Case Corporation was founded in 1983 to provide the lubricant industry with innovative solutions to extend oil and equipment life. The original breather was the brainchild of the Company founder, Jim Waller, who responded to the request of an engineer at a major oil company looking for a way to enhance the performance and longevity of his products. As a filtration engineer by trade, Jim's entrepreneurial spirit took hold with this opportunity and the breather was created and put into production.

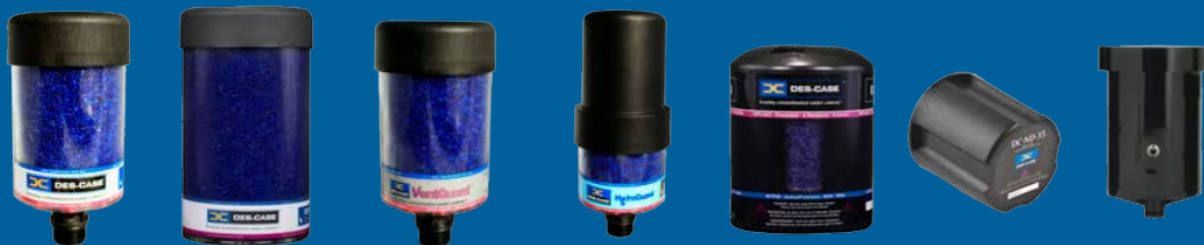
Des-Case also offers a line of off line filtration units, fluid handling products, and visual oil analysis products. For more than 30 years, the Company has enjoyed an excellent reputation for its products and service quality, dependability, and business integrity. Des-Case holds patents in the airflow design of breathers with technology that has yet to be surpassed in the marketplace.

DESICCANT BREATHERS

The desiccant breather replaces the standard dust cap or OEM breather cap on equipment, offering better filtration to protect against even the smallest particulates that destroy the effectiveness of your machinery, and cause downtime and costly repairs. As air is drawn into equipment through the breather, the layered desiccant filter elements remove particulate while the desiccant beads strip harmful moisture. While in service or during shut-down, the desiccant beads attract moisture from inside the equipment reservoir, actively drying the equipment.

1. **INTEGRATED NYLON STANDPIPE**—The integrated standpipe provides excellent vibration resistance and dissipates impact throughout the unit, eliminating weak points. It also allows even airflow distribution throughout the unit, eliminating inaccurate readings of desiccant saturation.
2. **RESILIENT POLYCARBONATE BODY**—Shock-absorbing, clear casing provides reliable service and easy maintenance.
3. **FILTER ELEMENT**—Polyester filter element removes airborne contamination to 3-micron absolute. Unique loops allow particles to release during system exhalation, helping to increase breather life.
4. **FOAM PAD**—Foam filter captures any oil mist and disperses incoming air evenly over filtration and drying areas.
5. **WATER VAPOR ADSORBENT**—Silica gel adsorbs water from incoming air and can hold up to 40% of its weight. Condition is indicated by change of color from blue to light pink.
6. **SECONDARY FILTER ELEMENT**—Second polyester filter element protects against migration of desiccant dust, providing maximum efficiency.
7. **THREADED MOUNTING**—Easily replaces standard filler/breather cap with multi-fit connection or one of several adapters.
8. **AIR VENTS**—Individual air intakes are opened based on flow requirements of the system. Plugs protect unit during shipping and storage.





PRODUCT ATTRIBUTES

	Standards	Extended Series	VentGuards	HydroGuards	Extreme Duty	Non-Desiccants	Rebuildable Steel
Silica	✓	✓	✓	✓	✓		✓
Foam Pad	✓	✓	✓	✓	✓		✓
Efficient Filter	✓	✓	✓	✓	✓	✓	✓
Integrated Standpipe	✓	✓	✓	✓	✓		✓
Impact Resistance	✓	✓	✓	✓	✓	✓	✓
Vibration Resistance (female thread)		✓			✓	ND-35 Only	
Caustic Chemical Resistance					✓	✓	✓
Check Valves		✓	✓	✓	✓		
Expansion Bladder				✓			
Disposable	✓	✓	✓	✓	✓	✓	
Integrated Honeycomb Oil Mist Reducer		✓					

FLUID HANDLING

- Portable Filtration
- Dedicated Filtration
- Vacuum Dehydration
- Lubricant Storage and Handling
- Adapter Kits
- Filter Elements

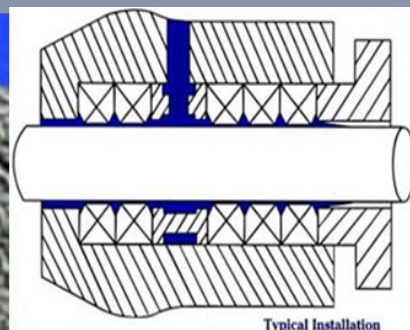


VISUAL OIL ANALYSIS

Oil sight glasses and other visual oil analysis products play a critical role in early detection of contamination and oil level problems, and allow for constant monitoring of what's happening inside equipment. These products are installed in the drain port of the oil reservoir of pumps, gearboxes, bearing housings, and other pieces of equipment. Visual oil analysis products provide continuous fluid monitoring of the clarity, color, sediment, and water contamination in the oil. Des-Case offers models that accommodate both vertical and horizontal mountings, high temperature, large volume, and more, to be used on virtually any piece of industrial equipment that has a drain or port.

- Oil Sight Glass Level Monitor
- Oil Level Indicator
- Oil Sight Glass
- 3-D Bullseye®





New England Braiding Co., Inc. (NEBCO) was founded in 1980 by George Champlin and Charlie Swan with an initial focus on the Pulp and Paper Industry. A North American distributor network was created and expanded internationally by 1990.

In pursuit of a product with superior performance, Mr. Champlin developed the ANTI-KEYSTONE® Packing Technology, receiving several US and worldwide patents over the next 15 years. Although using materials similar to those of NEBCO's competitors, the advanced ANTI-KEYSTONE® II Technology results in lower operational costs as a result of reduced friction, lower energy consumption, and longer packing and shaft/sleeve life.

New England Braiding Co. was named the exclusive licensee for this improved technology in 1995 and today remains the only authorized, licensed manufacturer in the world for the ANTI-KEYSTONE® II Technology.

As part of its ISO 9001- 2000 Quality Program, NEBCO remains committed to producing only the highest quality mechanical compression packings available in today's market. Very simply, if a finished product does not meet stringent inspection criteria, it is not shipped.

New England BRAIDING COMPANY INCORPORATED

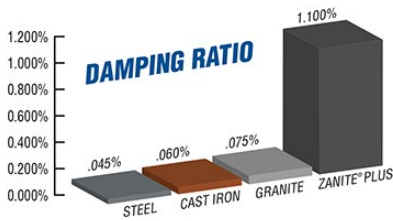
New England Braiding manufactures packing for industries including:

- Asphalt Plants
- Auto Assembly
- Battery Manufacturing
- Bottling Companies
- Breweries
- Brick Manufacturing
- Cement Plants
- Coal Mines
- Cold Storage
- Corn Processing
- Cotton Seed Oil
- Creosote Treating
- Dairies
- Distilleries
- Fertilizer Plants Fish Oil & Meal
- Food Processing
- Gas Manufacturing
- Greenhouses
- Gold Mines
- Hospitals
- Laundry-Dry Cleaning
- Lumber Operations
- Meat Packing Metal Casting
- Oil Refineries
- Paint Manufacturing
- Paper & Pulp Mills
- Pharmaceuticals
- Phosphate Mines
- Piano Manufacturing
- Plastic Molding
- Plywood Manufacturing
- Potteries
- Power Generation Plants
- Rolling Mills
- Rubber Manufacturing
- Sewage Disposal
- Ships & Shipyards
- Soy Bean Oil
- Raw Sugar Mill
- White Sugar Refining
- Textile Mills
- Textile Finishing & Dying
- Water Works
- Wire Manufacturing



Reliability Centered Solutions

BASETEK



ZANITE® PLUS POLYMER COMPOSITE

A base you can build on.

Founded in 2001, BaseTek specializes in the design and manufacture of polymer castings constructed of Zanite® Plus polymer concrete. Typical applications include ANSI/ASME pump bases and specialty rotating equipment baseplates, along with foundations used in the machine tool, semi-conductor, metrology, and automotive industries.

BaseTek also fills existing weldments of most any shape or size to enhance the vibration damping and reliability of your structure and equipment. BaseTek prides themselves on being the market leader in polymer concrete baseplates for the pump industry who proudly bring more combined years of casting experience than anywhere else in the United States.

Bases are manufactured of Zanite® Plus, a proprietary polymer concrete material which is a blend of pure silicon dioxide, ceramic quartz aggregate and high strength epoxy resins. BaseTek bases deliver a solid, unmatched surface flatness, and provide increased physical properties that surpass lower grade vinyl ester composites and fiberglass. They are corrosion resistant and offer higher tensile, flexural, and compression strength than vinyl ester. Zanite® Plus is continually tested to insure BaseTek is associated with the best materials on the market today. Properties are randomly tested for full compliance and exceed all published specifications.

POXYBASE® WITH ZANITE® PLUS

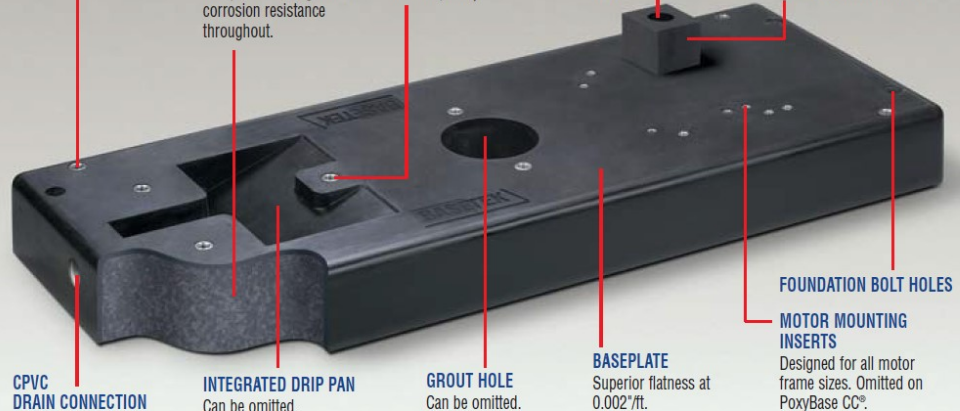
STAINLESS THREADED LEVELING INSERTS
For fast, accurate leveling of baseplate. Standard on all bases.

MADE FROM ZANITE® PLUS
A proprietary formula combining Epoxy resins with quartz aggregate for exceptional strength and corrosion resistance throughout.

STAINLESS STEEL PUMP & MOTOR INSERTS
Provide excellent corrosion resistance and durability. (Hastelloy C-276 available as an option.)

RISER BLOCK COUNTERBORE
Enables blocks to be securely fastened to base while installing and aligning motor.

POLYMER MOTOR RISER BLOCKS
Flatness of 0.001"/ft. make for accurate motor/pump alignment. Includes stainless steel hardware.



THE ADVANTAGES OF ZANITE® PLUS BASEPLATES

- Flat mounting surface to 0.002"/foot.
- Reduces grouting and installation problems, saving time and money.
- ASME/ANSI-1991 dimensionally compliant.
- Excellent resistance to twisting and diaphragming.
- Corrosion resistant to most chemicals.
- Multiple inserts for all motor frames standard on PoxyBase®.
- PoxyBase CC® designed to accommodate close-coupled installations.



Reliability Centered Solutions

WHITMORE®

A CSW Industrials Company



Established in 1893, Whitmore is a global leader in providing innovative products and services that increase the reliability, performance and lifespan of industrial assets. They manufacture high performance lubricants, friction modifiers, application equipment, OilSafe® lubrication management systems, Air Sentry® desiccant breathers, and cleaners designed to meet the specific needs of each industry and application. Industrial customers worldwide rely on Whitmore to deliver the performance engineered solutions industry counts on even in the most adverse conditions and demanding environments.



THE GOLD STANDARD IN CONTAMINATION CONTROL



Air Sentry® set the standard for contamination control breather technology in 1997, creating new state-of-the-art features that reduced particulate and moisture contamination. This innovative breather line was the first to integrate check valve technology and the first to offer replacement desiccant/filter cartridges, significantly reducing maintenance costs. Air Sentry® also manufactures a custom dryer for GCI designed for our Closed System Kits.



Reliability Centered Solutions



Z-SERIES

Limited Space Applications—Fully Disposable

D-SERIES

Stationary Applications—Fully Disposable

X-SERIES

High Humidity/High Dust Applications—Replacement Cartridges Available

GUARDIAN®

Ideal for Moist Applications—Replacement Cartridges Available—Customizable Modular Add-ons



The OilSafe® lubrication management system establishes best practices throughout your facility. Every step is color-coded to eliminate risk and human error, simplifying maintenance and extending the life of your equipment. Keep your business running with OilSafe®.

- Oil Transfer Equipment
- Grease Equipment
- Identification
- Bulk Storage
- Storage and Handling
- Spill Control



SATELLITE LUBE ROOM

When your lubricants are subject to remote or extreme conditions and interior space is limited, OilSafe's Satellite Lube Room offers a stand-alone system with placement flexibility and state of the art features. This convenient storage protects the lubricants quality and lifespan by reducing handling errors and controlling its environment. Add a Lubrication Work Center, Tote Dispensing Rack, Portable Filtration Cart and more to complete your room.



**Store.
Transfer.
Identify.**



FILTRATION UNITS

Extend the life of your industrial oils, saving you time and money. They maintain purity from storage to application and eliminate cross-contamination with color-coded/error-proof, flat face, zero-leak quick connects. Discover the cleanest and safest filtration systems on the market with three layers of spill containment to include a removable primary containment vessel, preventing spills and waste. Available in portable and stationary configurations.

Reliability Centered Solutions



LUNETATA

SMART PRODUCTS • RELIABLE MACHINES

Luneta, LLC develops advanced machinery lubricant inspection technology for machine condition monitoring and reliability. Luneta's technology is designed primarily for the heavy machinery market (OEM and aftermarket) used largely in process plants including petrochemical, power generation, primary metals, food processing, mining, pulp & paper, pharmaceutical, and cement manufacturing.

CONDITION MONITORING POD

Detect machine faults faster with the Condition Monitoring Pod. This multi-parameter inspection pod lets you quickly observe oil level, color and clarity, oil aeration and foaming, corrosion, varnish, wear debris and much more. You will quickly identify root causes and symptoms of failure that would have previously gone undetected.



THE HUB

The Hub delivers more port versatility than anything else on the market. Having four lateral ports allows you to install compatible attachments including oil level sight glasses, BS&W Bowls, sample valves, drain valves, filter cart, etc. all at the same time. And with a high flow sample port, the Hub can tackle any sampling needs you have.

THE COLUMN

The Column is a crystal-clear oil level sight glass that allows you to visually inspect the condition and level of oil in pumps, gearboxes, storage tanks and reservoirs. It features a one-piece design with 1-inch NPT threads at each end and includes a 3-micron breather. The Column can also be plumbed to vent back into the equipment's head space. Two tamper-proof level rings mark the idle and running oil level. Each ring is made of durable polycarbonate and secured in place with a hex screw.



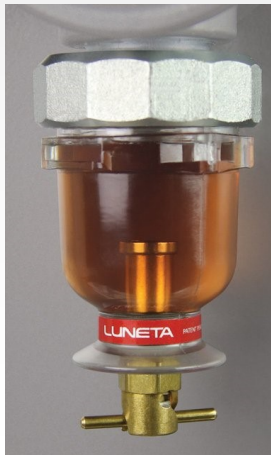
SIGHT GLASS

Luneta's new Sight Glass has all the clarity and durability you need, with none of the leaks, cracks or squinting you may be used to with those old-style oil sight glasses. You'll never have to use fragile, dark, hard-to-read oil sight glasses again!



THE BOWL

The ultimate 2-in-1 accessory, the Bowl serves as both a sight glass and BS&W bowl. Made of impact-resistant Tritan™, the Bowl is stronger than other drain port sight glasses, crystal clear and chemically resistant. The distinctive contour design allows for immediate visual inspection of the oil, along with early detection of potential contamination problems such as water and sediment. Providing a visual indication of wear debris while the machine is running, the Bowl's rare earth magnetic drain plug also protects machinery by attracting and drawing wear particles to the bottom, proactively preventing machine failure and enabling a thorough drain of contaminants.



Reliability Centered Solutions



CoorsTek

Amazing Solutions®

CoorsTek combines advanced materials technology, precision manufacturing, and decades of engineering experience to solve real-world challenges in the energy, security & defense, industrial machinery, agriculture & food, chemical, household durables, infrastructure electronics & semiconductor, medical, and transportation. They develop new ideas — applying deep expertise in engineered ceramics, advanced metals, and lightweight composite materials to deliver durable, multi-material products that extend performance lifetime, improve uptime, and reduce operating costs for our customers' critical-service applications.

Centrifugal Pump Products

Using advanced materials and manufacturing processes, CoorsTek provides high-performance replacement parts for a large variety of centrifugal pumps.

Ceramic Plungers

Ceramic plungers work exceptionally well for most saltwater, chemical, and metering applications. CoorsTek specially-formulated grades of ceramic allow a standard 8 RMS surface finish — dramatically extending packing life. Made of durable stainless steel, CoorsTek adapters successfully resist corrosion. CoorsTek uses a proprietary process to bond the ceramic body to the stainless steel adapter for reliable performance in extreme work environments.

Tungsten Carbide Plungers

The right choice for most power oil applications and other areas where the main concern is wear and abrasion, this premium alloy coating gives more wear resistance than our standard Hard-Co plunger.

Seats

The CoorsTek standard seat is a three-webb, investment-cast, 316 stainless steel unit also available in a five-webb, high-pressure design. Both styles are also available in Monel® stainless steel. The three webb style is rated at a maximum of 4200 psi (290 bar).

AquFlow

The Gold Standard in Metering Pump Technology

**PROUDLY MANUFACTURED
IN THE USA**

AquFlow is the legendary brand in metering pumps for food processing, water treatment, mining, chemical processing and agricultural applications. Originally founded in 1972 as Hydroflo to manufacture premium chemical metering pumps, this company was acquired by Precision Flow in 2007 and relaunched as Aquflow. With continued development and refinement, they currently have the most extensive range of flow capacities (1,750 GPH (Simplex), 3,500 GPH (Duplex), pressure and corrosion resistant materials of construction under one brand. Over the last 40 years they have gained a well-deserved reputation for making high quality pumps that outlast and outperform most competitive models. Pumps comply with API 675 Standards.



ABEL®

Pump Technology

Pumps for difficult Media

ABEL develops and manufactures reciprocating positive displacement pumps for varying flow rates and pump pressures and specializes in diaphragm pumps. Depending on the design, they are suitable for abrasive, aggressive, and even shear-sensitive media. ABEL is recognized around the world as the technological leaders in mechanical diaphragm pumps. Solids handling pumps (for paste-like and non-Newtonian media) and high pressure plunger pumps complete our range of products.

ABELS customers are active in:

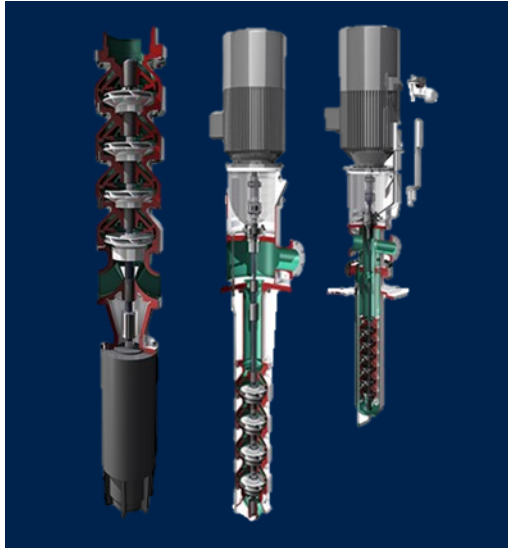
- Mining
- Water and waste water management
- Ceramics
- Chemical industry
- Oil and gas industries
- Energy industry.



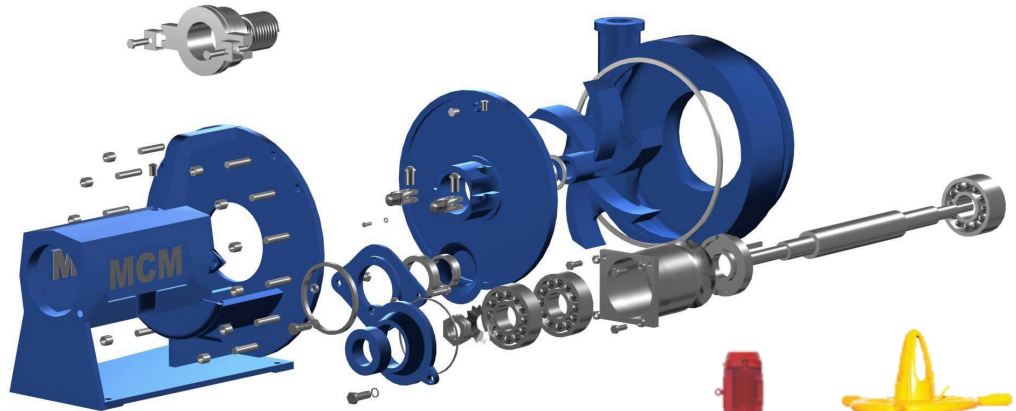
Reliability Centered Solutions

N^{PC} NATIONAL PUMP COMPANY

A GORMAN-RUPP COMPANY



In December of 2012, the American Turbine Pump company was acquired by National Pump Company. American Turbine Pump products complement National Pump's product line by increasing availability of product and model type for a variety of applications. Since its founding, American Turbine Pump believed in producing a product that demanded top quality, dependability and efficiency. Those standards still hold true today. American Turbine continues to produce some of the most energy-efficient vertical turbines and submersible pumps available in the world.



MCM Pumps has been manufacturing Centrifugal Pumps since 1943. Since that time many pump companies have entered the marketplace that are interchangeable with MCM Pumps such as Mission, Halco and Forum. Pumps are available in 118, 178, 250 and XL (Frac Pump) sizes. These Pumps can be built to handle your specific applications and needs including Horizontal, Overhead Belt Driven, Vertical, Diesel Driven, Hydraulic or Closed Coupled designs.



Reliability Centered Solutions



Since 1929, Northern Pump has manufactured HIGH PRESSURE heavy duty positive displacement rotary gear pumps. With Northern's inception as Northern Fire Apparatus Company through modern day, as part of McNally Industries, the intention is to manufacture a gear pump that can outperform others in high pressure and severe applications. Throughout Northern's long history, the heavy duty rotary gear pump stands the test of time. The quality of pumps manufactured today in the Grantsburg, WI facility, reflect a long history of precision manufacturing, pump engineering expertise, and a solid sales record. Northern heavy duty rotary gear pumps are the workhorses of the positive displacement application.

Wilden® Pump and Engineering LLC, part of PSG®, Oakbrook Terrace, IL, USA, is the leading global provider of air-operated double-diaphragm (AODD) pump technology. Since 1955, Wilden has been solving the toughest pumping applications in the world through excellence in research and development, deep market knowledge and unmatched customer service. PSG features a broad array of leading pump technologies as well as world-class facilities in the United States, Germany, China, India and France. The leading infrastructure, knowledge base and intellectual capital of PSG truly make it the power behind fluid transfer.



Apex Sealing, Inc. brings three decades of sealing experience to their distributors and end users worldwide. They are committed to providing the highest possible seal quality and value to each customer. Their broad range of products, progressive engineering support, and service sets them above the competition in today's market.



ETATRON IS A LEADER IN CHEMICAL DOSING PUMPS

DLX Series



The DLS and DLXB Series can be used in a wide variety of applications and include a manual air bleed pump head. They are simple to operate, durable and economical.

eOne Series



The eOne Series pumps provide constant dosing, energy savings, and low operating temperatures resulting in reduced mechanical stress.

PKX Series



The PKX Series solenoid dosing pump models include a wall or foot mounting option and are simple to use, highly reliable, and provide compact dimensions.

Reliability Centered Solutions



Sterling Seal & Supply Inc.

A STERLING CONSOLIDATED COMPANY



Sterling Seal engages primarily in the distribution and sale of O-rings, rubber seals, oil seals, custom molded rubber parts, custom Teflon parts, Teflon rods, O-ring cord, bonded seals, O-ring kits, and stuffing box sealant.

O-rings are one of the simplest, yet most engineered, precise, and useful seal designs. They are one of the most common and important elements of machine design. O-rings and the other products that Sterling Seal sells are used in a wide variety of industries, including automotive, pump, transmissions, oil and energy, machinery, and packaging. These products are utilized primarily as seals to prevent leakage of liquids or air. Most of the products carried by Sterling Seal are made of rubber, but some are coated and the rubber compound can change upon customer request.



Alemite offers a wide variety of lubrication equipment and fluid handling products designed to improve productivity and efficiency at affordable rates.

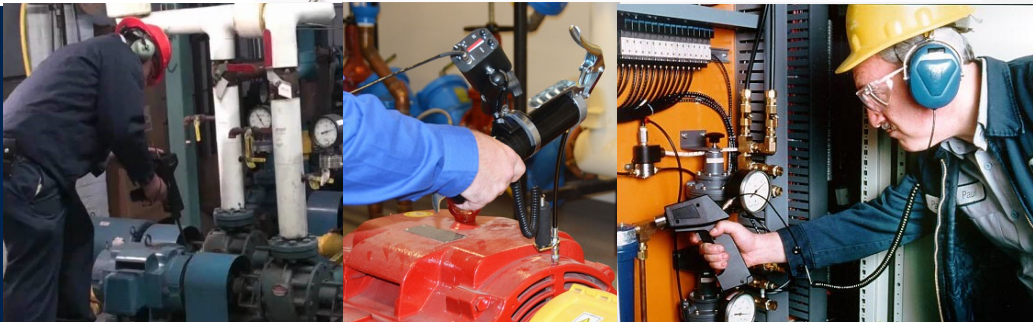


Reliability Centered Solutions

ue

SYSTEMS INC

The **ultrasound** approach



For over 40 years, UE Systems has produced thousands of ergonomically designed portable, and incredibly accurate airborne/structure borne ultrasonic instruments. Used primarily for leak detection, mechanical analysis and electrical inspection, these instruments have saved our clients tens of thousands of dollars in premature failure detection, elimination of downtime, increased productivity, and overall replacement costs. UE System's digital Ultraprobe® instruments are supported by Ultratrend DMS, a powerful data management software that fully integrates all inspections for effective plant-wide reliability and energy conservation. In fact, this patented software is the first of its kind to report both cost and carbon footprint reduction while enabling users to analyze, repair and report their savings.

Kytola

INSTRUMENTS



Kytola® Instruments OY is part of a group of companies that is family owned under the Kytola® name. Kytola is a manufacturer and developer of flow meters, oil lubrication systems and oil analyzers.

Products:

- Flow Meters
- Alarms for Variable Area Flow Meters
- Constant Flow Regulators
- Oil Lubrication Flow Meters
- Check Valves
- Process Transmitters

- Oil Lubrication Flow Monitoring Systems
- Oil Analyzers
- Differential Pressure Meters
- Air Sampling Devices
- Pressure Switches

Reliability Centered Solutions



ULTRATECH

INTERNATIONAL, INC.



Products for a cleaner, safer world.

The founders of UltraTech International pioneered the field of spill containment products in the early 1980's. UltraTech was formed in 1993 with one goal in mind: to create the world's finest offering of spill containment and spill response products. Since then, its vision has expanded into additional product categories and the company now features a product line that consists of over 300 unique products.

- Spill Containment
- Stormwater Management
- Facility Protection
- Construction Compliance
- Oil Spill
- Microbes
- Rad Waste Management



AVEHO™

Odor Removal Technology

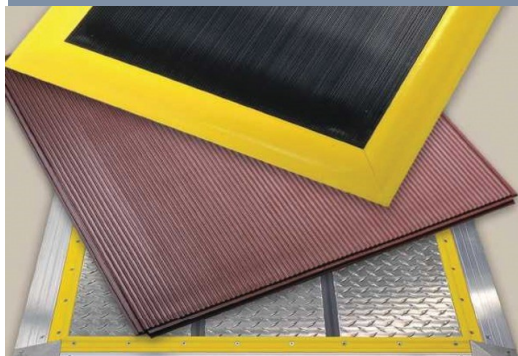
Sometimes life stinks...
It doesn't have to.
-Aveho.



DON'T MASK ODORS. ELIMINATE THEM FOREVER.™

The most innovative odor remover in the universe.™

Reliability Centered Solutions



Tapeswitch Corporation was founded in 1959. The first product manufactured was ribbon switch, which was invented by the founder of Tapeswitch, Robert Koenig, and his wife Sondra, who was a brilliant mechanical engineer. For the last 35 years, Tapeswitch has been a major player in the development and manufacture of sensors for safety applications, and currently has the widest range of safety mat, sensing edge, and sensing bumper products available anywhere in the marketplace.



Superior Solutions

Zep Inc. is a leading provider of specialty chemical products to a wide variety of industrial, institutional and retail customers. Certified as an ISO-9001 & 14001 manufacturer, Zep Inc. produces more than 3,500 sanitation and maintenance products for professional use, including detergents, disinfectants, hand cleaners, degreasers, deodorants, lubricants, floor finishes, and pest control solutions.

"WAB" Chemicals produces an industry-leading line of heavy duty acids, cleaners, degreasers, dressings, waxes, polishes, and brushes. WAB's highly concentrated, job specific chemicals are the most comprehensive offered to the heavy duty truck market!



Products that do...



...what they say they do!

Reliability Centered Solutions



SOLBERG®

Filtration • Separation • Silencing

Solberg is a filtration, silencing and separation specialists corporation dedicated to engineering and manufacturing innovative solutions that help customers in a wide variety of markets.



Oil-Rite lubrication equipment is instrumental in maintaining machinery and monitoring fluid flow across a wide expanse of industries. Oil-Rite equipment applications include:

- Apply lubricant to chains and conveyors in high-speed canning facilities
- Automatically replace oil in large bearings in nuclear facilities
- Dispense grease during assembly processes
- Lubricate car crushing machines in recycling operations
- Monitor hydraulic fluid levels in off-road equipment
- Circulate oil to turbine bearings in wastewater plants

Oil-Rite product is developed by an in-house design team and manufactured in the United States for use in North America and throughout the world. The quality management system is ISO 9001:2008 certified.

Reliability Centered Solutions

Reliability Solutions

Keeping equipment operating at satisfactory performance levels and identifying potential or imminent failures and their consequences is the ongoing work of reliability and maintenance professionals. With increasing job performance requirements and expanding roles, industry leaders often look for reliable partners they can trust to help them reach their goals.

For over 30 years, GCI has established itself as a trusted source for reliability centered solutions in Louisiana. Through quality product distribution from industry-leading manufacturers, superior customer service and training, we are professionals serving professionals.

G.C.I., Inc. provides reliability solutions to a variety of industries including, but not limited to, Oil and Gas, Chemical Processing, Pulp and Paper, Power Generation, Mining, Primary Metals, Food, Beverage, Pharmaceuticals, and Sugar Refining.



ABOUT US

G.C.I., Inc. (originally Gulf Coast Industrial Equipment Company) was established in 1984 by John Godso as the Duriron distributor for Durco pumps, seals, and valves in the Southeast. To create a full service business concentrated on meeting the needs of their customers, G.C.I. began to seek out distributorships that would provide the products and services industry professionals required. In 2012, Barry Bond, long time employee of GCI and his wife, Janie Bond, purchased the business. G.C.I. focuses on finding cost effective solutions for reliability and maintenance professionals through quality products and superior customer service.



7756 Pecue Lane • Baton Rouge, LA 70809-5109
PO Box 83657 • Baton Rouge, LA 70884-3657
Phone 225.752.9791 • Fax 225.751.0143
www.gcibr.com • sales@gcibr.com